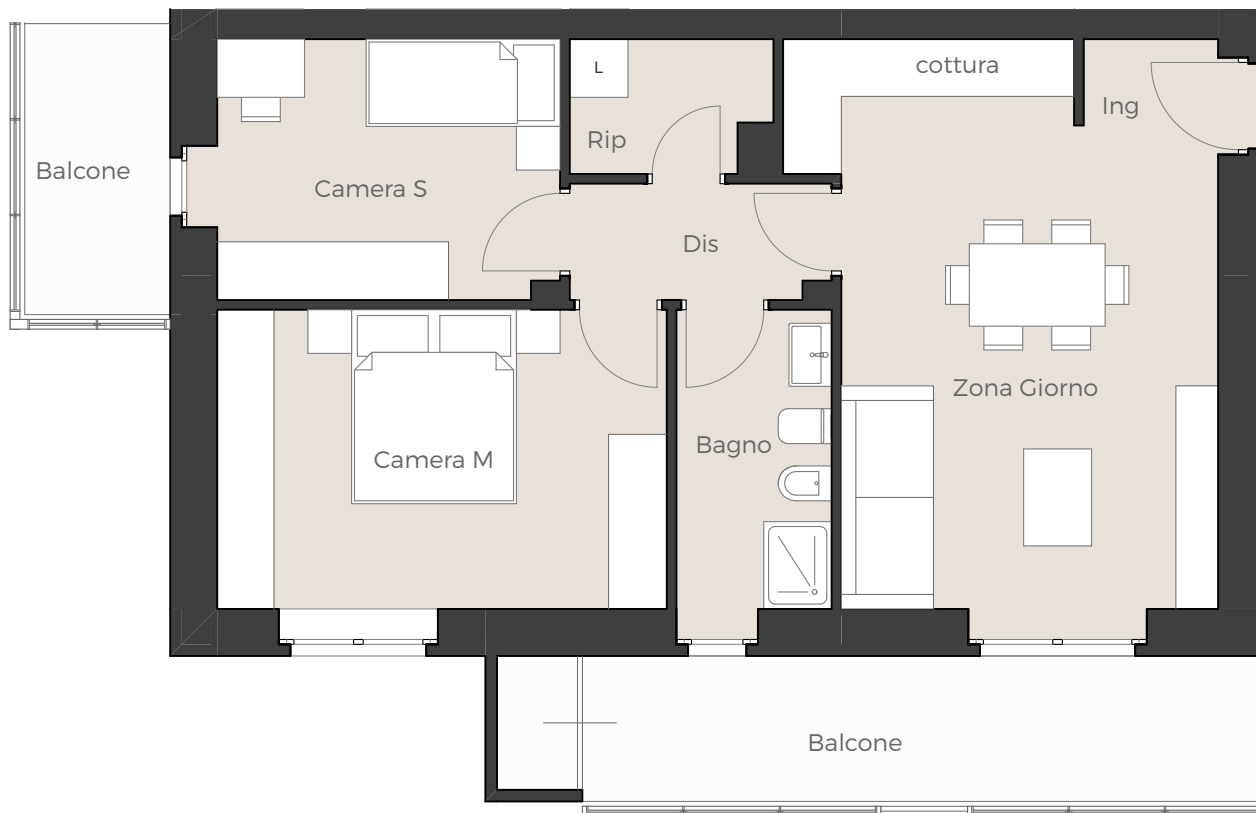


# TIPOLOGIA 1 PIANO TIPO



**SV<sub>ALLOGGIO</sub> = 71,63 MQ**

**SV<sub>TOTALE</sub> = 81,41 MQ**

\* S<sub>BALCONI</sub> AL 50%

## TRILOCALE

servizio, ripostiglio, due balconi  
cantina e box auto al piano interrato  
orientamento: 4 opzioni